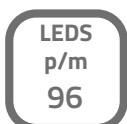
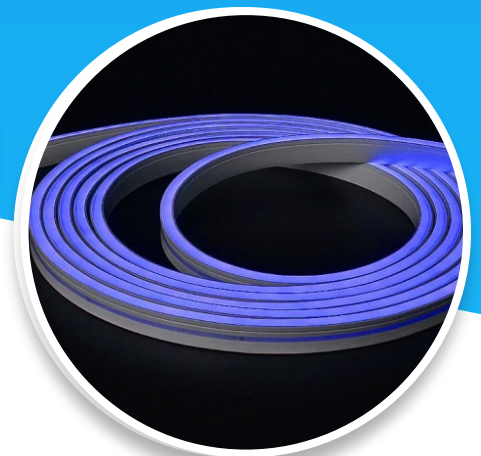
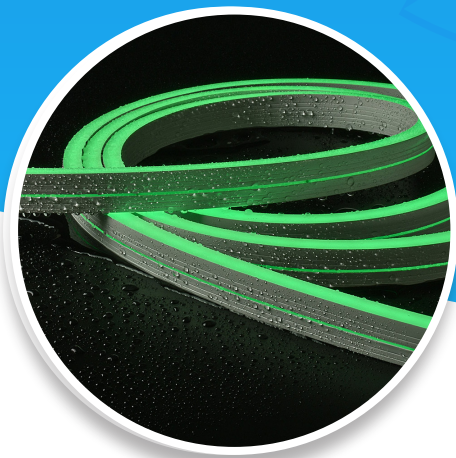




LedKoning

NEON LED STRIP

NEON FLEX LEDSTRIP RGB MIDI RECHT



SPECIFICATIES

Algemene kenmerken

Dimbaar	Ja
3M plakstrip over gehele lengte	Nee
Garantie	5 jaar
Op maat te knippen	6,25 cm

LED's en licht

Aantal LED's p/m	96 leds/m
Type LED	4040 SMD
Merk LED	Epistar
Stralingshoek	120°
Kleur	RGB
Kleurtemperatuur (Kelvin)	-
CRI	-
Aantal branduren	50.000

Technische specificaties

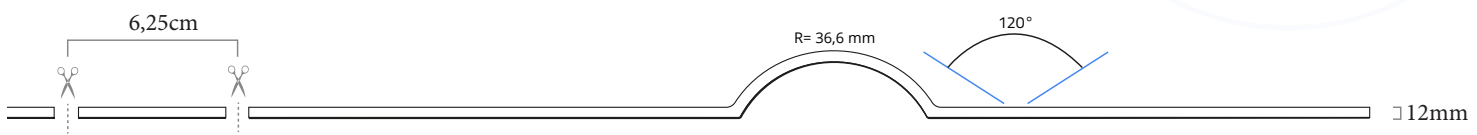
Lichtsterkte (lumen) p/m	163,1 lumen
Voltage (DC)	24V
Watt - vermogen p/m	12W
Lichtsterkte (lumen) per Watt	52,7 lumen
Watt per LED	0,125W

Strip eigenschappen

Bescherming	IP67
Materiaal waterdichte bescherming (IP65/IP67)	Siliconen
Achtergrond kleur strip (PCB)	Wit
Plakstrip	-
Breedte led strip	6 mm
Dikte led strip	12 mm
Aansluiting begin	3-pins stekker type vrouw (waterdicht)
Aansluiting einde	Verloop 3-pins naar 4-pins stekker man (waterdicht)

TECHNISCHE TEKENINGEN

IP67

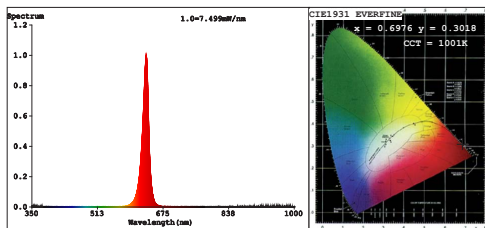


DETAILFOTO'S



SPECTRUM TESTRAPPORTEN

Spectrum Test Report



Color Parameters:

Chromaticity Coordinate: $x=0.6976$ $y=0.3018/u'=0.5340$ $v'=0.5197$
 CCT=1001K (Duv=-0.0865) Dominant WL:Ld =633.6nm Purity=99.8%
 Ratio:R=96.3% G=3.7% B=0.0% Peak WL:Lp=633.2nm FWHM=15.9nm
 Render Index:Ra=27.6 CRI=33.2

R1 =8 R2 =79 R3 =32 R4 =0 R5 =4 R6 =90 R7 =7
 R8 =0 R9 =0 R10=73 R11=0 R12=79 R13=31 R14=61 R15=0

Photo Parameters:

Flux = 27.31 lm Eff. : 6.73 lm/W Fe = 147.2 mW

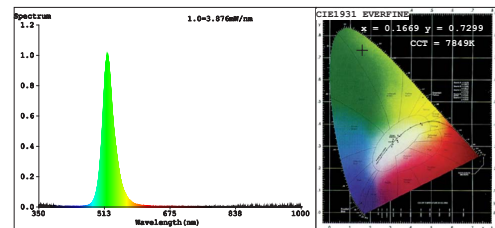
Electrical parameters:

V = 23.997 V I = 0.1692 A P = 4.060 W PF = 1.000
 LEVEL:OUT WHITE:OUT

Status: Integral T = 500 ms Ip = 47588 (73%)

Model:N0612-RGB Number:1M-R
 Tester: Date:2020-07-31 18:43:42
 Temperature:Deg Humidity:%
 Manufacturer:Ledkoning Remarks:---

Spectrum Test Report



Color Parameters:

Chromaticity Coordinate: $x=0.1669$ $y=0.7299/u'=0.0584$ $v'=0.5750$
 CCT=7849K (Duv=0.1589) Dominant WL:Ld =526.8nm Purity=81.6%
 Ratio:R=0.3% G=97.9% B=1.7% Peak WL:Lp=519.2nm FWHM=29.4nm
 Render Index:Ra=0.0 CRI=2.7

R1 =0 R2 =0 R3 =0 R4 =0 R5 =0 R6 =0 R7 =0
 R8 =0 R9 =0 R10=0 R11=0 R12=0 R13=0 R14=37 R15=0

Photo Parameters:

Flux = 67.91 lm Eff. : 16.04 lm/W Fe = 140.0 mW

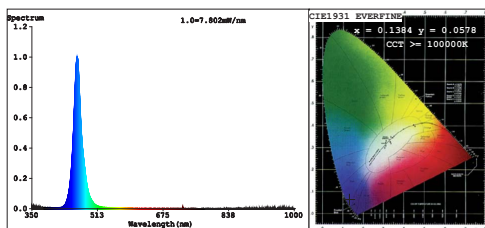
Electrical parameters:

V = 23.997 V I = 0.1764 A P = 4.233 W PF = 1.000
 LEVEL:OUT WHITE:OUT

Status: Integral T = 500 ms Ip = 34934 (53%)

Model:N0612-RGB Number:1M-G
 Tester: Date:2020-07-31 18:44:26
 Temperature:Deg Humidity:%
 Manufacturer:Ledkoning Remarks:---

Spectrum Test Report



Color Parameters:

Chromaticity Coordinate: $x=0.1384$ $y=0.0578/u'=0.1620$ $v'=0.1522$
 CCT=100000K (Duv=-0.1655) Dominant WL:Ld =467.3nm Purity=96.2%
 Ratio:R=0.9% G=19.3% B=79.8% Peak WL:Lp=461.8nm FWHM=20.2nm
 Render Index:Ra=1.4 CRI=0.8

R1 =0 R2 =0 R3 =0 R4 =0 R5 =11 R6 =0 R7 =0
 R8 =0 R9 =0 R10=0 R11=0 R12=0 R13=0 R14=0 R15=7

Photo Parameters:

Flux = 13.58 lm Eff. : 3.13 lm/W Fe = 205.1 mW

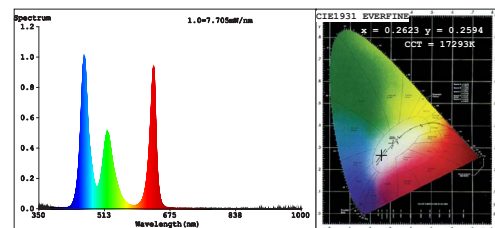
Electrical parameters:

V = 23.997 V I = 0.1807 A P = 4.336 W PF = 1.000
 LEVEL:OUT WHITE:OUT

Status: Integral T = 435 ms Ip = 49680 (76%)

Model:N0612-RGB Number:1M-B
 Tester: Date:2020-07-31 18:45:18
 Temperature:Deg Humidity:%
 Manufacturer:Ledkoning Remarks:---

Spectrum Test Report



Color Parameters:

Chromaticity Coordinate: $x=0.2623$ $y=0.2594/u'=0.1878$ $v'=0.4177$
 CCT=17293K (Duv=-0.0032) Dominant WL:Ld =476.2nm Purity=31.2%
 Ratio:R=23.7% G=65.0% B=11.3% Peak WL:Lp=462.8nm FWHM=20.5nm
 Render Index:Ra=39.8 CRI=35.2

R1 =15 R2 =55 R3 =72 R4 =33 R5 =38 R6 =54 R7 =52
 R8 =0 R9 =0 R10=0 R11=18 R12=57 R13=22 R14=78 R15=0

Photo Parameters:

Flux = 106.6 lm Eff. : 8.45 lm/W Fe = 483.1 mW

Electrical parameters:

V = 23.997 V I = 0.5257 A P = 12.62 W PF = 1.000
 LEVEL:OUT WHITE:OUT

Status: Integral T = 435 ms Ip = 49142 (75%)

Model:N0612-RGB Number:1M-W
 Tester: Date:2020-07-31 18:45:52
 Temperature:Deg Humidity:%
 Manufacturer:Ledkoning Remarks:---

CE CERTIFICAAT

Certificate of Conformity 

Certification No. : KESJC20231123000046644E
Applicant : LedKoning
Address : Rietveldenweg 49D 5222AP DEN BOSCH The Netherlands
Manufacturer : LedKoning
Address : Rietveldenweg 49D 5222AP DEN BOSCH The Netherlands
Certification Marking : CE-EMC
Product Description : Flex LED Neon Strip
Model : NLWWLS-MDRT01M, NLWWLS-MDRTXXM, NLDWLS-MDRTXXM, NLRBLS-MDRTXXM, NLWWLS-MDTVXXM, NLDWLS-MDTVXXM, NLRBLS-MDTVXXM, NLWWLS-PVTV070CM, NLRBLS-MXRTXXM, NLRBLS-MXRDXXM
Trademark : N/A

The above products have been tested by us with listed standards and found in compliance with the Directive 2014/30/EU. It is possible to use CE marking to demonstrate the compliance with this Directive.

Test Standards	: EN IEC 55015: 2019 + A11:2020 : EN 61547: 2009
-----------------------	---

The certificate is based on a single evaluation of tested samples of above-mentioned product. It does not imply an assessment of the whole production and does not permit the use of the test laboratory logo.

CE

Authorized Signer: 
Kevin Liu / Manager
November 29, 2023

Shenzhen KES Testing & Certification Co., LTD
Room 405, Floor 4th, Building C, Yuxing Technology Industrial Park, Xixiang Street, Bao'an District, Shenzhen, Guangdong
86-755-23009643 86-755-23009643 <http://www.kaixitest.com>


LedKoning

Rietveldenweg 49D
5222AP Den Bosch
Niederlande/Nederland
info@ledkoning.nl
+31 73 704 11 00